



**BURNS SCI-TECH HIGH
SELECTING AN ARCHWAY**

Mission

To cultivate learners and leaders who are inspired, able, and prepared to make a positive difference in the world.

The Goal is to Prepare Students for their Next Step in Life.

IS THIS THE BEST WAY TO PRAISE STUDENTS?

- ▶ *“You’re such a great student!”*
 - ▶ *“You’re so smart!”*
- 
- A decorative graphic consisting of several parallel white lines of varying lengths, slanted upwards from left to right, located in the bottom right corner of the slide.

BUILDING GROWTH MINDSET AND RESILIENCE

Carol Dweck studies growth mindsets and resilience.

A decorative graphic consisting of several parallel white lines of varying lengths, slanted diagonally from the bottom right towards the top right, located in the lower right quadrant of the slide.

GROWTH VS. **FIXED MINDSET**

- ▶ Students care about how they'll be judged: **smart or not smart.**
- ▶ **Reject opportunities** to learn if they might make mistakes. When make mistakes, rather than correct them, they try to hide them.
- ▶ Ability should bring success all by itself. **You shouldn't need effort because effort makes them feel dumb.** (Terrible Belief) It can cause many bright students to stop working in school when the curriculum becomes challenging.
- ▶ Undeserved praise also drives kids to **stay in their comfort zone**, which prevents them from branching out, trying new things, and developing new skills.
- ▶ **Don't recover well from setbacks.** When they hit a setback in school, they decrease their efforts and **consider cheating.**

GROWTH VS. FIXED MINDSET

- ▶ Students **care about learning**.
- ▶ When they make a mistake or exhibit a deficiency, they **correct it**. For them, **effort is a positive thing**: It ignites their intelligence and causes it to grow.
- ▶ In the face of failure, these students **escalate their efforts** and look for **new learning strategies**.
 - ▶ Example - Student finds the new material hard, and confusing, unlike anything else the student has ever learned. But determined to understand it. The student listens to everything the teacher says, asks the teacher questions after class, takes the textbook home, and reads the chapter over twice. As the student begins to get it, the student feels exhilarated. A new world of math opens up.

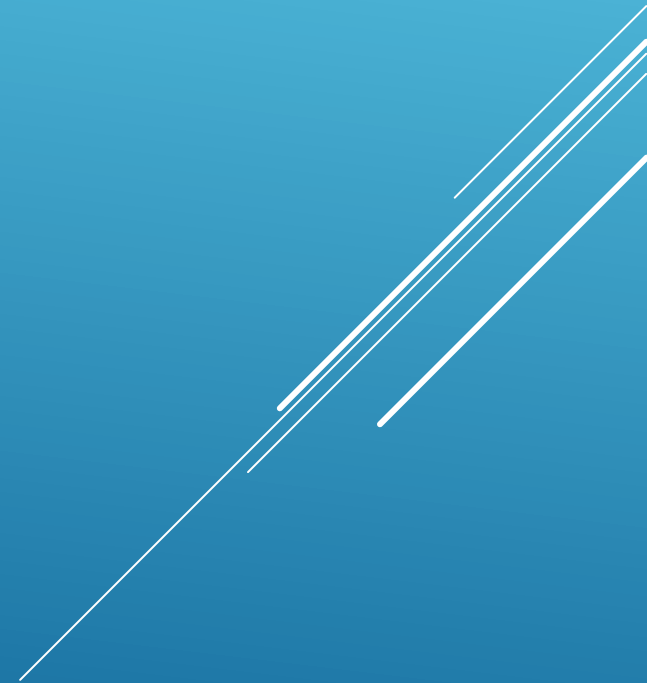
BUILDING GROWTH MINDSET AND RESILIENCE

- ▶ Students need to be **valued for their effort and contribution**, which will lead them to be more engaged and strive to achieve.

BUILDING GROWTH MINDSET AND RESILIENCE

- ▶ **Effort praise sounds like this:**
- ▶ I like the way you tried all kinds of strategies on that math problem until you finally got it.
- ▶ It was a long, hard assignment, but you stuck to it and got it done because you kept working. That's great!
- ▶ You really studied for your English test, and your improvement shows it. You read the material over several times, outlined it, and tested yourself on it. That really worked!

STUDY
MORE
AND
REMAIN
TEACHABLE



WE SHOULDN'T REWARD KIDS OUT OF OUR OWN MISGUIDED SENSE OF PITY. WE SHOULD BE INSTILLING IN THEM THE DESIRE TO WORK HARDER AND GO THE EXTRA MILE IN ORDER TO WIN MORE MEANINGFUL PRIZES.

-LAUREN PAVELIK

NEW AWARDS SYSTEM – EFFORT TO ACHIEVEMENT

- ▶ Awards for the end-of-the-year ceremonies will now be based on merit.
 - ▶ **Attitude - Gold – Silver – Bronze Awards for Achievement Checklist**
 - ▶ Achievement Checklist includes but is not limited to: academics, behaviors, extracurricular activities, volunteer hours, & school spirit.
 - ▶ The more a student completes, the higher the Achievement!
 - ▶ Top Performers - Automatic Entrance into AP Capstone Program
 - ▶ **Integrity Achievement (Replaces Perfect Attendance – Rewards Self-Control)**
 - ▶ Being in the top 10% in the lowest amount of discipline points & highest amount of community service.
 - ▶ **Motivation - Academic Achievement using the Latin Honors System**
 - ▶ **Cum laude:** “With distinction,” 3.5–3.6 GPA
 - ▶ **Magna cum laude:** “With great distinction,” 3.7–3.8 GPA
 - ▶ **Summa cum laude:** “With the highest honor,” 3.9–4.0 GPA
 - ▶ Elective and Community Awards

GRADE POINT AVERAGE (GPA)

Weighted GPA

- AP and Dual Enrollment = 5.0 scale
- Honors courses = 4.5 scale
- Regular courses = 4.0 scale
- Used for college entrance

Unweighted GPA

- All courses are on a 4.0 scale
- Used to graduate high school



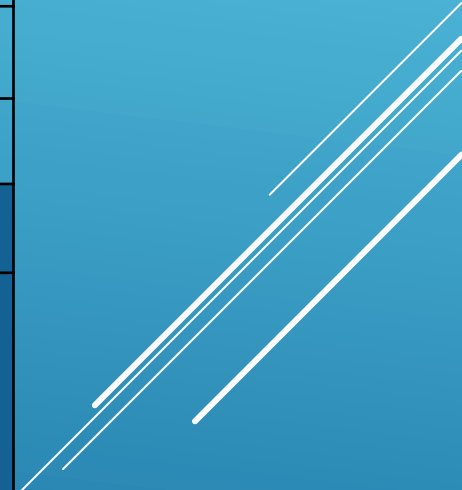
STANDARD HIGH SCHOOL DIPLOMA

CATEGORIES	CREDITS
ENGLISH LANGUAGE ARTS ELA honors, Advanced Placement (AP), and dual enrollment courses may satisfy this requirement	4
MATHEMATICS <ul style="list-style-type: none">• 1 credit in Algebra I (EOC= 30% and Pass EOC)<ul style="list-style-type: none">• 1 credit in Geometry (EOC = 30%)• 2 credits in any additional math courses*	4
SCIENCE <ul style="list-style-type: none">• 1 credit in Biology (EOC = 30%)• Two of the three required course credits must have a laboratory component	3
SOCIAL STUDIES <ul style="list-style-type: none">• 1 credit in World History• 1 credit in United States History (EOC = 30%)<ul style="list-style-type: none">• ½ credit in Economics• ½ credit in United States Government	3



STANDARD HIGH SCHOOL DIPLOMA

CATEGORIES	CREDITS
PHYSICAL EDUCATION <ul style="list-style-type: none">• ½ credit in Personal Fitness• ½ credit in any other PE course	1
PERFORMING FINE ARTS	1
PERSONAL FINANCIAL LITERACY & MONEY MANAGEMENT	1/2
ELECTIVES	8
TOTAL	24 Credits
<ul style="list-style-type: none">• 2.0 Grade Point Average (GPA)• One course must be taken online• Grade 10 English Language Arts (ELA) or a concordant score• Algebra 1 end of course (EOC) or a comparative score	



COLLEGE REQUIREMENTS



STATE UNIVERSITY SYSTEM (SUS)

High school graduation with a standard diploma,
a minimum of a 2.5 GPA, and admission test scores.

- 16 credits of approved college preparatory academic courses
- 4 English (3 with substantial writing)
- 4 Mathematics (Algebra 1 level and above)
- 3 Natural Science (2 with substantial lab)
- 3 Social Science
- 2 World Language (sequential, in the same language)
- 2 approved electives



SCHOLAR DIPLOMA DESIGNATION

Meet the 24-credit diploma requirements, and:

- Earn 1 credit in Algebra 2 or an equally rigorous course
- Pass the Geometry EOC
- Earn 1 credit in Statistics or an equally rigorous math course (Pre-Calculus Honors, Dual Enrollment Math, AP math)
- Pass the Biology 1 EOC*
- Earn 1 credit in Chemistry or Physics
- Earn 1 credit in a course equally rigorous to Chemistry/Physics
- Pass the U.S. History EOC*
- Earn 2 credits in the same World Language
- Earn at least 1 credit in an AP or a dual enrollment course



WHY?



The Goal is to Prepare Students for their next step in Life





ARCHWAYS

ENTREPRENEUR

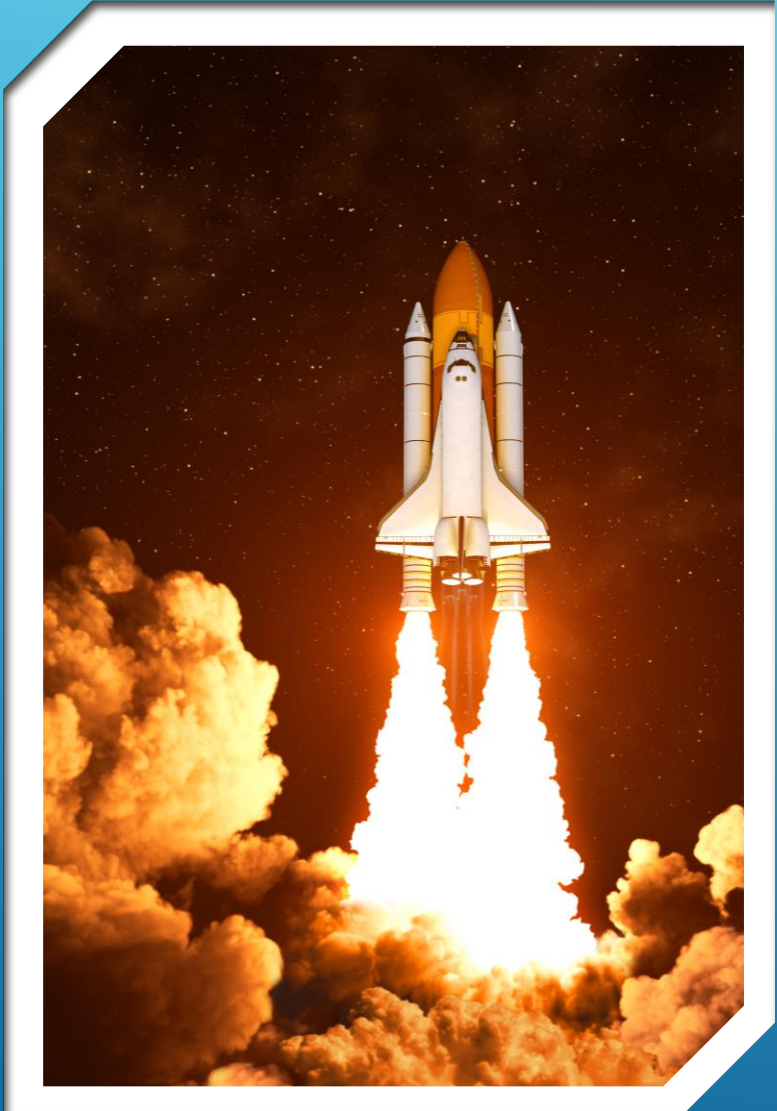
SCHOLAR

INNOVATOR

ONCE YOU PICK AN
ARCHWAY, IT SETS UP YOUR
COURSES AND SCHEDULE.

CHOOSE WISELY!!!

ENTREPRENEUR ARCHWAY



- Prepares students for their Career or Vocational School
- ▶ Students do not need a 4-year degree but may need additional training, license, or certification.

ENTREPRENEUR ARCHWAY

Real Estate

Sales, Insurance,
Office Manager

Aircraft Pilot or Flight
Attendant

Personal Trainer or
Massage Therapist

Barbers, Hairstylists,
and Cosmetologists

Agriculture, Farming

Manufacturing,
Technician, Plant
Operators, or
Maintenance and
Repair

Carpenter or
Construction

Plumber or
Electrician or
Electrical Powerline
Installers

Auto Mechanic,
Military

Chefs and Head
Cooks

Driver – Delivery,
Taxi, Bus,
Postmasters

Medical Records,
Pharmacy
Technician, Hearing
Aid Specialist,
Optician

Community Health
Workers, Firefighter,
Law Enforcement,
Dispatchers

Web Developer or
Programmer

SCHOLAR ARCHWAY

- ▶ Students who want to gain entrance into prestigious Colleges and Universities.
- ▶ Academic Focus
 - ▶ College Writing Skills with Research
 - ▶ STEM – High-Level Courses in Science, Technology, Engineering, and Mathematics.
 - ▶ Experimental Science Labs
 - ▶ Emphasis on Advanced Placement and not Dual Enrollment





Scholar

Entrepreneur

INNOVATOR ARCHWAY

- ▶ **Combination of Scholar and Entrepreneur ARCHways.**
- ▶ **Allows for students to obtain their AA degree.**
- ▶ **Students are still able to take Advanced Placement Courses.**

Similar to a Traditional High School Pathway

ARCHWAY REQUIREMENTS



ENTREPRENEUR ARCHWAY

- Prepares students for their Career or Vocational School
- Merit Diploma Designation (2.0 GPA Requirement)
 - Meet the standard high school diploma requirements
 - Attain one or more industry certifications
- Student is expected to complete an internship or OJT (On-Job-Training)
- Complete the three Entrepreneur Courses and pass the Industry Certification
- Be a part of and compete in DECA
- Eligible for the FLEX SCHEDULE

BURNS SCI-TECH *Entrepreneurship ARCHway*



APPLYING REAL-WORLD CONCEPTS HOUSTON ONLY
THE BRIDGE TO REAL LIFE
ARCH

BURNS SCI-TECH HIGH SCHOOL
ENTREPRENEURSHIP
Preparing students to soar after high school!

LEARNING SKILLS:
STUDENTS LEARN STUDY SKILLS
BASED ON THEIR OWN PERSONAL
STYLE.

BUSINESS SKILLS:
STUDENTS SIMULATE BEING AN
EMPLOYEE, MANAGER AND/OR
COMPANY OWNER TO SOLVE REAL
WORLD PROBLEMS AND
UNDERSTAND BUSINESS
PRINCIPLES.

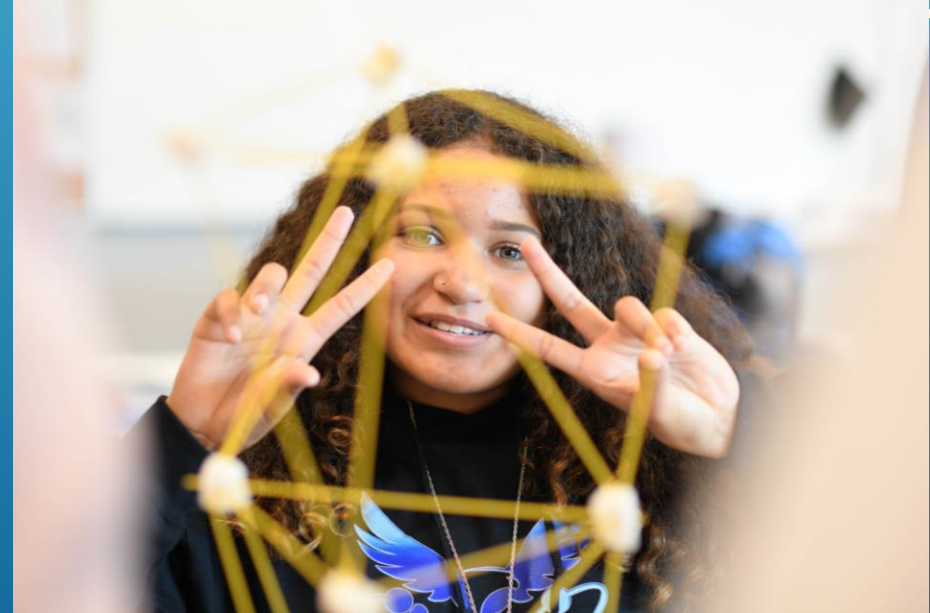
FINANCIAL LITERACY SKILLS:
STUDENTS EARN A FICTITIOUS
SALARY OBTAINED FROM THEIR
BUSINESS CHOICE. THE SALARY IS
THEN USED TO BUY DISCRETIONARY
ITEMS, PAY THEIR BILLS AND TAXES,
AND CAPITALIZE ON INVESTMENT
OPPORTUNITIES.

Burns SciTech High

Business Skills: Students simulate being an employee, manager and/or company owner to solve real world problems and understand business principles.

Financial Literacy Skills: Students earn a fictitious salary obtained from their business choice. The salary is then used to buy discretionary items, pay their bills and taxes, and capitalize on investment opportunities.

Entrepreneurship



SCHOLAR ARCHWAY

- **Prepares students for Rigorous College Studies**
- **Capstone & Scholar Diploma Designations (3.5 GPA Req.)**
 - **Meet the highest level of high school diploma requirements**
- **Expected to complete the six Capstone Courses including AP Seminar and AP Research.**
- **Complete the Managing Your Success (SLS) Course**
- **Be a part of AP Capstone and National Honor Society**
- **Not Eligible for the FLEX SCHEDULE (Labs are on Fridays)**

SCHOLAR STUDENTS MUST BE IN THE AP CAPSTONE PROGRAM

AP Capstone is a higher academic program designed to develop the critical thinking, research, collaboration, time management, and presentation skills needed to gain entrance and have success at the university level.

Students must take AP Seminar and AP Research

This program will include advanced placement and dual enrollment courses.

******Application required for entry******

Scholar ARCHway

ADVANCED PLACEMENT (AP) COURSES



AP US HISTORY



AP ENGLISH
LANGUAGE AND
COMPOSITION



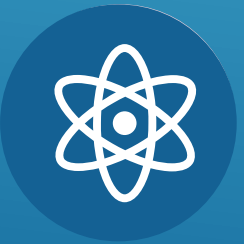
AP ENGLISH
LITERATURE AND
COMPOSITION



AP BIOLOGY



AP CHEMISTRY



AP PHYSICS 1 & 2



AP PRE/CALCULUS



AP STATISTICS



AP 2-D ART
PORTFOLIO



AP PSYCHOLOGY

INNOVATOR ARCHWAY

- Prepares students for College and Career
- Scholar and Merit Diploma Designations (2.5 GPA Req.)
 - Meets the academic requirements to attend college
- Expected to complete an Entrepreneur Course and the Industry Certification.
- Complete the Managing Your Success (SLS) Course
- Be a part of an Academic Club such as SGA or NHS.
- Eligible for the FLEX SCHEDULE

INNOVATOR IS THE BEST ARCHWAY FOR THE DUAL ENROLLMENT PROCESS

Dual Enrollment Eligibility Requirements

- Be enrolled in 6th - 12th grade
- Have taken at least one high school-level course
- College credit programs: 3.0 cumulative, unweighted high school GPA
- Vocational programs: 2.0 cumulative, unweighted high school GPA



Dual Enrollment Process

	Summer 2024	Fall 2024
Registration Begins	April 4	April 4
Registration Deadline	May 6	May 31

Important Dates

- *Students must complete their DSC admissions application, placement testing, and submit a signed dual enrollment form with courses elected for Full/A/B term courses by this date to be enrolled.*

REMEDIATION PROGRAM

- **Students that have a GPA lower than 2.0 or have failed courses**
- **Learn organizational skills, study skills, & how to take notes.**
- **Expected to complete an Entrepreneur Course and the Industry Certification.**
- **Must attend Fridays and possibly Summer School for remediation.**
- **Not Eligible for the FLEX SCHEDULE**

THE ARCHWAYS

ENTREPRENEUR

&

INNOVATOR

MUST PICK AN *EiSTEAM* PATHWAY

ELSTEAM

Entrepreneurs

Innovating

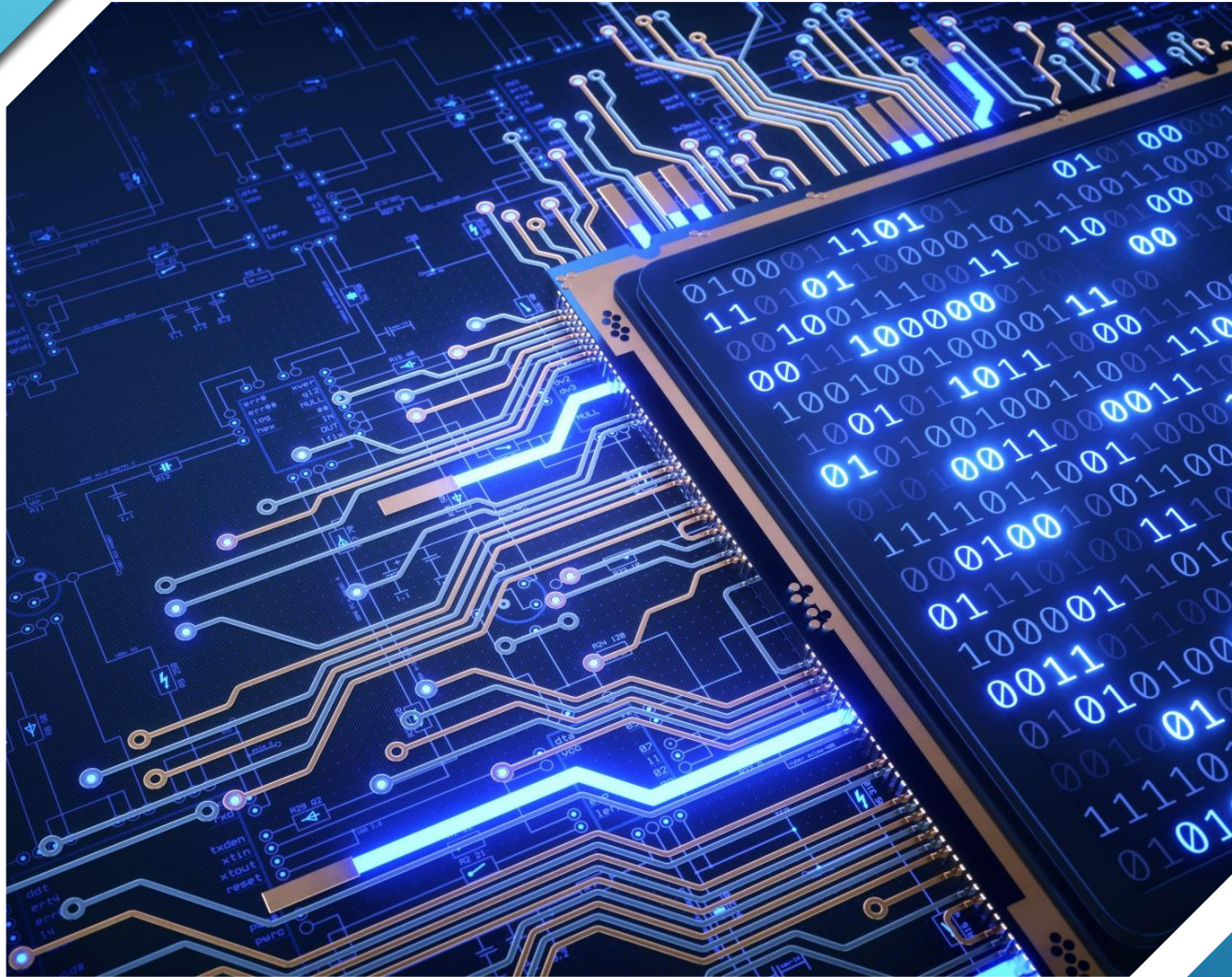
▶ **Science**

▶ **Technology**

▶ **Engineering**

▶ **Art**

▶ **Mathematics**



EiSTEAM Pathways



Ei-Leadership



Science



Technology



Engineering



Artistic Design



Mathematical and Marketing Concepts



BURNS SCI-TECH EISTEAM PATHWAYS

Ei-Leadership Pathways



Entrepreneurship & Business – required for the Entrepreneur ARCHway but an option for Innovators and Scholars.



Student Government - is a group of students that are charged with managing a wide range of events, activities, programs, policies, and initiatives around the school

Ei-Leadership Pathway

BURNS SCI-TECH EISTEAM PATHWAYS

Science Pathways



Exercise Science- Find solutions to improve the health and wellness of people. This program leads to personal training certification & how to design workout programs.



Educational Science- Learn how to become a teacher by working effectively with students, educational technology, classroom management, communication skills, and skills needed to support students' learning.



Agriscience and Animal Science -FFA Students use scientific principles and emerging technologies to solve complex problems related to agriculture, animals, and natural resources.



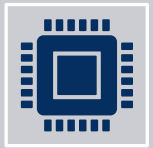
Experimental Science – Students will conduct labs and experiments geared towards competitions or to help the community.

Science Pathway



BURNS SCI-TECH EISTEAM PATHWAYS

Technology Pathways



Technology Services- Provide specialized technology-oriented solutions by combining software, hardware, networks, telecommunications, and electronics processes & functions.



Game & Sim Design- Video Game Creation, with an introduction to coding, programming, and 3D character modeling. Esports team development is also a part of this program.

Technology Pathway



BURNS SCI-TECH EISTEAM PATHWAYS

Engineering Pathways



Engineering - Using scientific principles to design and build machines, structures, and other items. This course will lead to Aerospace Engineering.



Transportation Technology- Learn about designing and building rockets, airplanes, cars, motorcycles, and boats. Innovations in transportation technology are essential.



Technological Systems – Learn a variety of vocational skills to prepare for an internship, vocational school, or a career.

Engineering Pathways



BURNS SCI-TECH EISTEAM PATHWAYS

Artistic Pathways



Art Portfolio Development- A RIGOROUS self-directed environment to develop an online portfolio showing a collection of your work and artist statements. Learn about careers in art.



Musical Theatre- Students learn to use acting and singing tools to create, articulate, and execute public performances.



Music– Learn how to create music through technology or learn to play music for performances.



Multi-Media Journalism – use a variety of media platforms to create a print and digital yearbook.

Artistic Pathways



BURNS SCI TECH
THEATRE & DANCE
PRESENT
Disney
FROZEN JR.
DECEMBER
12th & 13th
6pm



BURNS SCI-TECH EISTEAM PATHWAYS

Mathematical and Marketing Pathways



Aviation- Learn from a flight academy instructor from EPIC on how to fly a plane using flight simulators.



Social Media and Business Marketing – This course is designed to provide students with an in-depth study of marketing in a free enterprise society and includes advertising, promotion, product development and branding, selling, and marketing research.

Mathematical & Marketing Pathway

BURNS SCI-TECH ELECTIVES

Monday – Thursday Electives

- ❖ Spanish
- ❖ Multimedia Journalism – Yearbook
- ❖ Pilot Program
- ❖ Forensic Science
- ❖ Genetics
- ❖ Culinary
- ❖ Psychology
- ❖ Student Government
- ❖ PE – Weightlifting – Yoga – Team
- ❖ Art – 2D and 3D
- ❖ Music and Musical Theatre
- ❖ Digital Marketing

Friday Electives

- ❖ Experimental Science
- ❖ Business and Marketing
- ❖ Peer Tutoring
- ❖ Study Skills Course
- ❖ Practical Skills Training
- ❖ Teacher Assistant
- ❖ PE with Weightlifting
- ❖ Labs for Dual Enrollment
- ❖ Labs for Online Course
- ❖ Study Hall with Tutoring
- ❖ OJT and Internships Off Campus
- ❖ OJT on Campus

Electives

7TH AND 8TH GRADE PLAN



NEW 7TH-8TH GRADE SCHEDULE

Period	Monday - Friday
Homeroom	8:10 – 8:27
1 st Period	8:30 – 9:33
2 nd Period	9:35 – 10:38
Snack Break	10:38 – 10:43
3 rd Period	10:43 – 11:46
4 th Period	11:48 – 12:51
Lunch	12:51 – 1:21
5 th Period	1:23 – 2:26
6 th Period	2:28 – 3:31
Homeroom / Dismissal	3:33 – 3:40

Eagle Hour rotates between the 6 classes on Fridays.

NEW 7TH GRADE SAMPLE SCHEDULE

Courses	Monday - Friday
English Reg or Advanced	Year Long
7 th Mathematics, PreAlgebra, or Algebra 1 Honors	Year Long and Must Pass EOC
Civics	Year Long and Must Pass EOC
Science	Year Long
Physical Education	Semester
World Literacy (Emphasis on Reading Comp and Writing)	Semester
STEM Physical, Life or Environmental	2 nd Semester
Elective	1 st Semester
Year Long Advanced	Spanish 1 (High School)

NEW 8TH GRADE SAMPLE SCHEDULE

Courses	Monday - Friday
English Reg or Advanced	Year Long
PreAlgebra, Algebra 1 Honors or Geometry Honors	Year Long and Must Pass EOC
US History	Year Long
Science	Year Long
Physical Education	Semester
Computer Applications in Business 1 and Career Planning	Semester
STEM Physical , Life or Environmental	1 st Semester
Elective	2 nd Semester
Year Long Advanced	DIT or Spanish 1 (High School)

BURNS SCI-TECH ELECTIVES

- ❖ Spanish 1 or 2 (High School)
- ❖ DIT (High School)
- ❖ Multimedia Journalism – Yearbook
- ❖ Culinary
- ❖ TEST IT – Mr. Z
- ❖ STEM or Engineering Apps – Ms. Mucci
- ❖ Lagoon Leader – Ms. Duncan
- ❖ 2D & 3D Art - Ms. Zahn
- ❖ Music Theatre – Ms. Lee
- ❖ Teacher Aide
- ❖ Intro & Aerial Yoga
- ❖ Agriscience – Ms. Roof
- ❖ Digital Marketing
- ❖ Student Government
- ❖ Team Sports
- ❖ Music
- ❖ BUGS

Electives

NEW FLEXIBLE HIGH SCHOOL SCHEDULE

- ▶ Class Periods will go from 50 min to 63 minutes.
 - ▶ Fridays will be individualized learning, organizational, and study skills.
 - ▶ Students not required to attend on Fridays can complete
 - ▶ Volunteers Hours
 - ▶ Work a Job
 - ▶ Complete School Work
 - ▶ Online Course
- * If a student gets behind in schoolwork or has a behavior issue, they must attend school on Friday

NEW FLEXIBLE HIGH SCHOOL SCHEDULE

3 Choices

- ▶ **Regular Hour High School Schedule**
 - ▶ **With electives on Friday.**
- ▶ **6 period with optional Fridays**
- ▶ **7 Periods with optional Fridays**

NEW FLEXIBLE HIGH SCHOOL SCHEDULE

Period	Monday - Thursday	Friday
Homeroom	8:10 – 8:27	Homeroom in Gym 8:10 – 8:27
1 st Period	8:30 – 9:33	8th Period – Study Skills – Elective - Labs
2 nd Period	9:35 – 10:38	8:30 am – 12:45 pm
Snack Break	10:38 – 10:43	Snack Break 10:30 – 10:40
3 rd Period	10:43 – 11:46	
4 th Period	11:48 – 12:51	Lunch 12:45 – 1:21
Lunch	12:51 – 1:21	
5 th Period	1:23 – 2:26	1:23 – 3:31
6 th Period	2:28 – 3:31	Study Hall – Meet with Subject Area Teacher
Break/Early Dismissal	3:33 – 3:40	National Honors Society with Volunteer Hours
7 th Period	3:40 – 4:43	
Dismissal	4:45	Homeroom 3:33 – 3:40

NEW 9TH GRADE SAMPLE SCHEDULE

Courses M-R	Entrepreneur	Innovator	Scholar
English	English 1 Reg or Hon	English 1 Reg, Hon, PreAP	PreAP English
Mathematics	Alg 1a, Alg 1, Geo, Alg 2	Alg 1a, Alg 1, Geo, Alg 2	Honors - Alg 1, Geo, Alg 2
Science	Agriscience or Environmental Science	Agriscience, Environmental, or Biology	PreAP Biology
Physical Education	Personal Fit & Comp	Personal Fit & Comp	Personal Fit & Comp
Required Electives	Entrepreneurship	Entrepreneurship	Writing for College & SLS
Electives	ARCHway	ARCHway or World Language 1	World Language 1
Optional 7 th Period Elective	Optional Elective	Optional Elective	Optional Elective
Friday Courses	<u>FLEX Schedule</u> Off or Elective & Study Hall	<u>FLEX Schedule</u> Off or Elective & Study Hall	Experimental Science 1 Honors and Study Hall

NEW 10TH GRADE SAMPLE SCHEDULE

Courses M-R	Entrepreneur	Innovator	Scholar
English	English 2 Reg or Hon	English 2 Reg, Hon, PreAP	PreAP English 2
Mathematics	Alg 1b, Geo, Alg 2, Financial Math	Geo, Alg 2, Stats, PreCalc	Honors - Geo, Alg 2, AP PreCalc
Science	Biology Reg or Hon	Biology Reg, Hon, AP	AP Biology
Social Studies	World History Reg or Hon	World History Reg or Hon	World History Hon
Required Electives	Business Management & Law	Business Management or SLS and College Writing	AP Capstone Seminar
Electives	ARCHway	ARCHway or World Language	World Language 2
Optional 7 th Period Elective	Optional Elective	Optional Elective	Optional Elective
Friday Courses	<u>FLEX Schedule</u> Off or Elective & Study Hall	<u>FLEX Schedule</u> Off or Elective & Study Hall	AP Biology Lab and Study Hall

NEW 11TH GRADE SAMPLE SCHEDULE

Courses M-R	Entrepreneur	Innovator	Scholar
English	English 3 Reg or Hon	English 3 Reg, Hon, AP	AP English 3
Mathematics	Geo, Alg 2, Financial Math, Lib Math or Stats	Alg 2, Stats, PreCalc, AP Calc	Honors - Alg 2, AP PreCalc, AP Calc
Science	Physical Science	Chemistry or an AP Science	AP Physics or Chemistry
Social Studies	US History Reg or Hon	US History Reg, Hon, AP	AP US History
Required Electives	Business Ownership	Business Ownership or ARCHway	World Language 3 or High-Level Elective
Electives	ARCHway, Internship, OJT, Directed Study	ARCHway or World Language	Elective
Optional 7 th Period Elective	Optional Elective	Optional Elective	Optional Elective
Friday Courses	<u>FLEX Schedule</u> Off or Elective & Study Hall	<u>FLEX Schedule</u> Off or Elective & Study Hall	Experimental Science 2 and Study Hall

NEW 12TH GRADE SAMPLE SCHEDULE

Courses M-R	Entrepreneur	Innovator	Scholar
English	English 4 Reg or Hon	English 4 Reg, Hon, AP	AP English 4
Mathematics	Alg 2, Financial Math, Lib Math or Stats	Stats, PreCalc, AP Calc	Honors - Sats AP PreCalc, AP Calc
Science	Forensic Science or Anatomy & Physiology	All Sciences Available	AP Physics 1 or 2 or AP Chemistry
Social Studies	Govt & Financial Economics	Govt & Financial Economics	Govt & Financial Economics
Required Electives	Life Plan Directed Study	Life Plan Directed Study or AP Research	AP Capstone Research
Electives	ARCHway, Internship, OJT	ARCHway, World Language, Internship, OJT	World Language 4 or High-Level Elective
Optional 7 th Period Elective	Optional Elective	Optional Elective	Optional Elective
Friday Courses	<u>FLEX Schedule</u> Off or Elective & Study Hall	<u>FLEX Schedule</u> Off or Elective & Study Hall	Experimental Science 3 and Study Hall